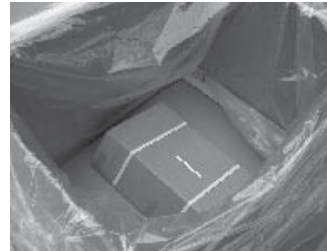


Open Chair Carton

1. Remove retaining straps and packing cardboard and remove pre-assembled chair base from Chair Carton.



2. Locate wedge shaped hardware wrap located in bottom of carton.



3. Open wedge shaped wrap and remove Head Frame and Foot Frame. Cut ties to separate the two components



4. Do not discard any packing materials until you have confirmed each component listed. The Perfect Chair packing materials are recyclable.



fold

Refer to the Perfect Chair Use and Care Manual for complete assembly instructions.

fold

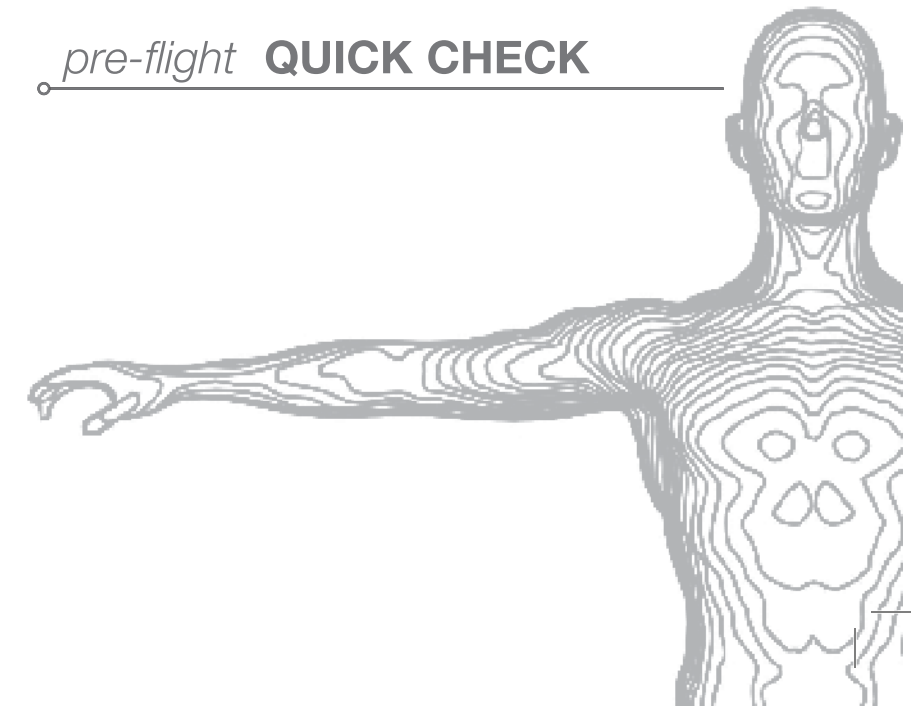
The Perfect Chair®



CAUTION

Sitting in the Perfect Chair before it is completely assembled could result in permanent damage to chair and personal injury.

pre-flight QUICK CHECK



 **INTERACTIVE HEALTH**
www.interhealth.com

Unpacking The Perfect Chair®

Please use this Quick Check List to assist with unpacking and confirming the components that make up your new Perfect Chair.

The Perfect Chair is carefully packed in two separate cartons pictured below.

After completely unpacking the Perfect Chair, please take a moment to familiarize yourself with the various components included.

Refer to the Perfect Chair Use and Care Manual for complete assembly instructions. At no time should you sit in the Perfect Chair before it is completely assembled.



Careful inspection of these high quality components will reveal the precision that is built into your new Perfect Chair.

- | Chair Carton | Pad Carton |
|--|--|
| <input type="checkbox"/> Chair Base - pre-assembled main frame | <input type="checkbox"/> Body Pad |
| <input type="checkbox"/> Foot Frame | <input type="checkbox"/> Head Pad |
| <input type="checkbox"/> Head Frame | <input type="checkbox"/> Neck Pillow |
| <input type="checkbox"/> Head Sock | <input type="checkbox"/> Arm Caps - 1 left + 1 right |
| <input type="checkbox"/> Use & Care Manual | <input type="checkbox"/> Optional Head/Lumbar Pillow |